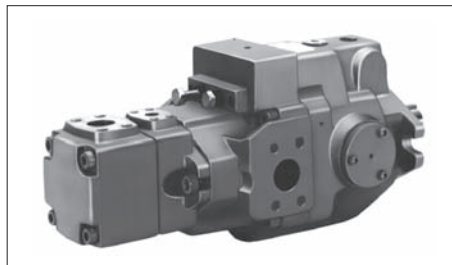
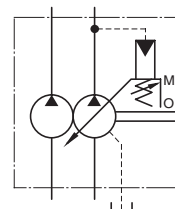


Series Piston Pumps – Variable / Fixed Double Pumps



Graphic Symbol



■ Model Number Designation

A1637	-F	-R	Inboard Pump (Driven End)		Outboard Pump			K	-32
			01	C	-23	A	A		
Series Number	Mounting	Direction of Rotation	Control Type	Pres. Adj. Range MPa	Nominal Displacement cm ³ /rev	Discharge Port Position	Suction Port Position	Shaft Extension	Design Number
A16R1	F: Flange Mtg.	(Viewed from Shaft End) R: Clockwise ^{★1} (Normal)	01: Pressure Compensator Type	B : 1.2- 7 C : 1.2-16 D : 1.2-21	6, 8 10, 12 14, 17 19, 23 25, 31	(Viewed from Shaft End) A: Up	A: Up	K: Keyed Shaft	32
A22R1				B : 1.2- 7 C : 1.2-16					32
A37R1				B : 1.2- 7 C : 1.2-16 D : 1.2-21					32
A56R1				B : 1.2- 7 C : 1.5-16 H : 1.8-21 K : 2.0-28					32
A70R1	L: Foot Mtg.	(Viewed from Shaft End) R: Clockwise ^{★1} (Normal)	01: Pressure Compensator Type	B : 1.2- 7 C : 1.5-16 H : 1.8-21 K : 2.0-28	41,47 56,59 65	(Viewed from Shaft End) A: Up	A: Up	None: Keyed Shaft	60
A90R1				B : 1.2- 7 C : 1.5-16 H : 1.8-21 K : 2.0-28					60
A145R1				B : 1.2- 7 C : 1.5-16 H : 1.8-21 K : 2.0-28					60
A70R2				B : 1.2- 7 C : 1.5-16 H : 1.8-21 K : 2.0-28					60
A90R2				B : 1.2- 7 C : 1.5-16 H : 1.8-21 K : 2.0-28					60
A145R2				B : 1.2- 7 C : 1.5-16 H : 1.8-21 K : 2.0-28					60

★1. Available to supply pump with anti-clockwise rotation. Consult Yuken for details.

Consult Yuken when detailed material such as dimensions figures is required.

Specifications

Model Numbers		Geometric Displacement cm ³ /rev	Operating Pressure MPa		Shaft Speed Range r/min		Approx. Mass kg	
			Rated	Intermittent	Max.	Min.	Flange Mtg.	Foot Mtg.
A16R1- *R01 *-AAK-32	Outboard Pump	Refer to the following table			1800	750	28.8	31.0
	Inboard Pump	15.8	16	21				
A22R1- *R01 *-AAK-32	Outboard Pump	Refer to the following table			1800	750	28.8	31.0
	Inboard Pump	22.2	16	16				
A37R1- *R01 *-AAK-32	Outboard Pump	Refer to the following table			1800	750	39	43.3
	Inboard Pump	36.9	16	21				
A56R1- *R01 *-AAK-32	Outboard Pump	Refer to the following table			1800	750	47	51.3
	Inboard Pump	56.2	16	21				
A70R1- *R01 *-AA-60	Outboard Pump	Refer to the following table			1800	750	66	78
	Inboard Pump	70.0	25	28				
A90R1- *R01 *-AA-60	Outboard Pump	Refer to the following table			1800	750	82	105
	Inboard Pump	91.0	25	28				
A145R1- *R01 *-AA-60	Outboard Pump	Refer to the following table			1800	750	102	129
	Inboard Pump	145	25	28				
A70R2- *R01 *-AA-60	Outboard Pump	Refer to the following table			1800	600	72.5	84.5
	Inboard Pump	70.0	25	28				
A90R2- *R01 *-AA-60	Outboard Pump	Refer to the following table			1800	600	91.5	112
	Inboard Pump	91.0	25	28				
A145R2- *R01 *-AA-60	Outboard Pump	Refer to the following table			1800	600	112	137
	Inboard Pump	145	25	28				

Geometric Displacement and Max. Pressure of Outboard Pump

Model Numbers	Geometric Displacement cm³/rev	Max Pres. MPa	
		Anti-Wear Type	R & O Type
A *R1- *R01 *-6	5.8	21	16
A *R1- *R01 *-8	8.0		
A *R1- *R01 *-10	9.4	21	
A *R1- *R01 *-12	12.2		
A *R1- *R01 *-14	13.7		
A *R1- *R01 *-17	16.6		
A *R1- *R01 *-19	18.6		
A *R1- *R01 *-23	22.7	17.5	
A *R1- *R01 *-25	25.3	15	15
A *R1- *R01 *-31	31.0	12	12
A *R2- *R01 *-26	26.6	21	14
A *R2- *R01 *-33	33.3		
A *R2- *R01 *-41	41.3		
A *R2- *R01 *-47	47.2	20	
A *R2- *R01 *-53	52.5	18	
A *R2- *R01 *-59	58.2	16	
A *R2- *R01 *-65	64.7	14	